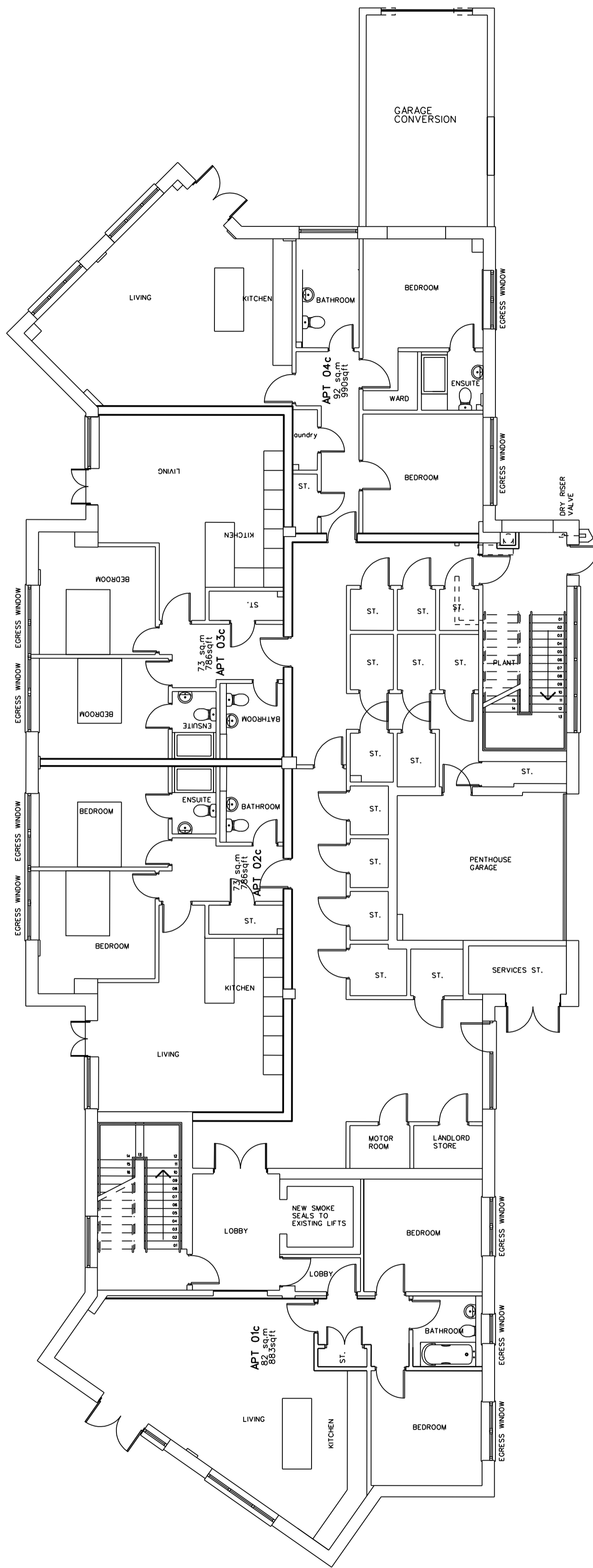
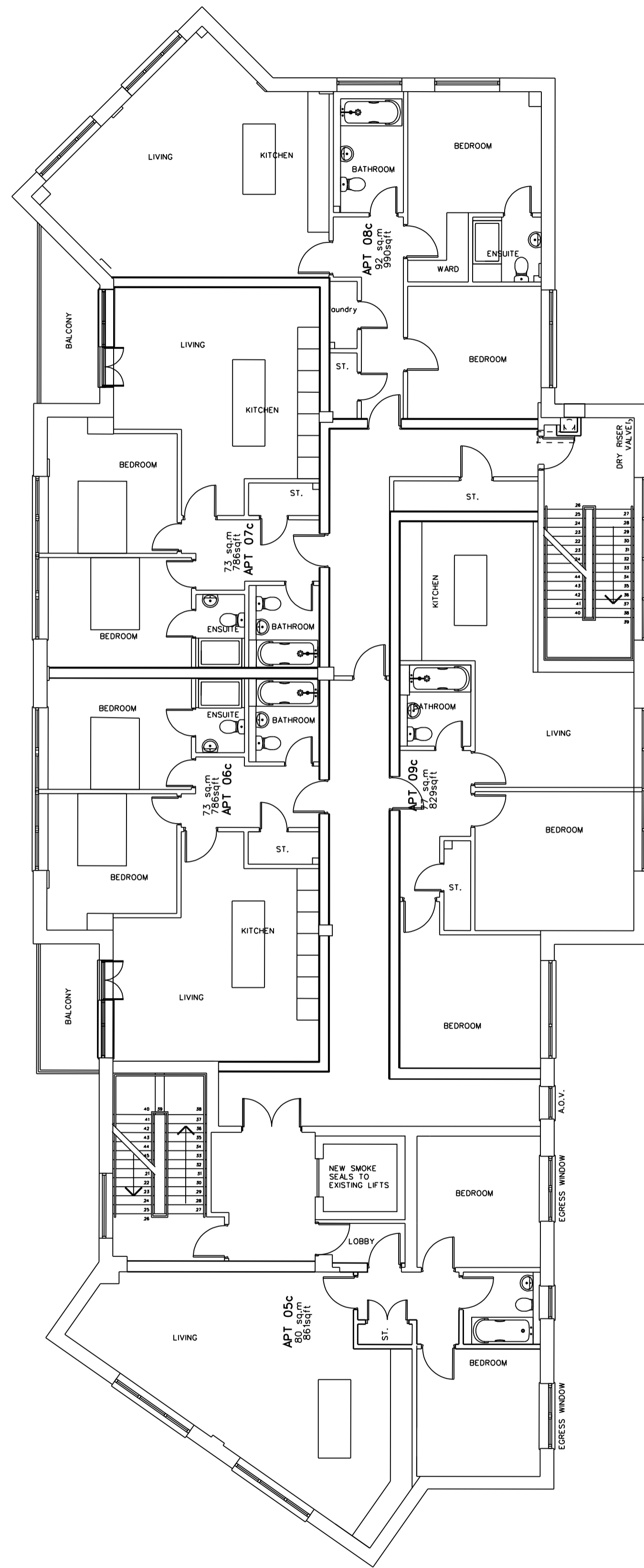


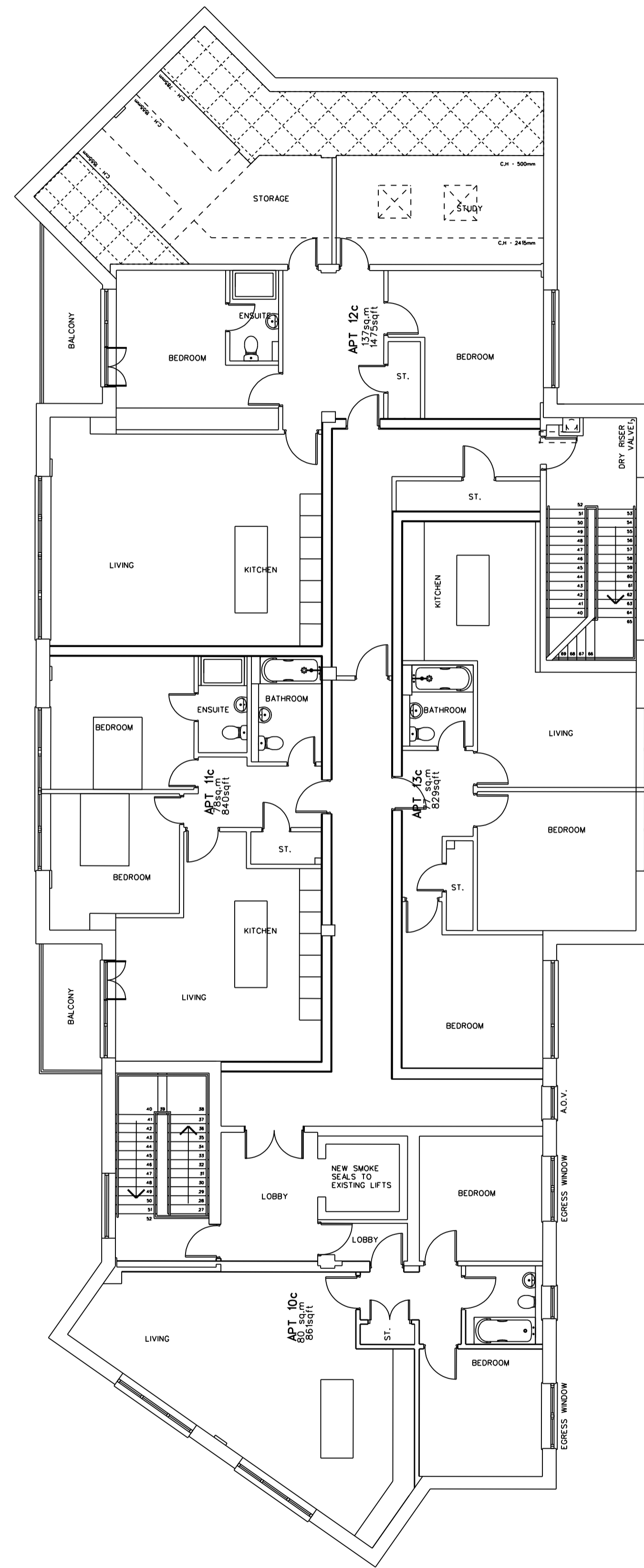
PROPOSED FLOOR PLANS



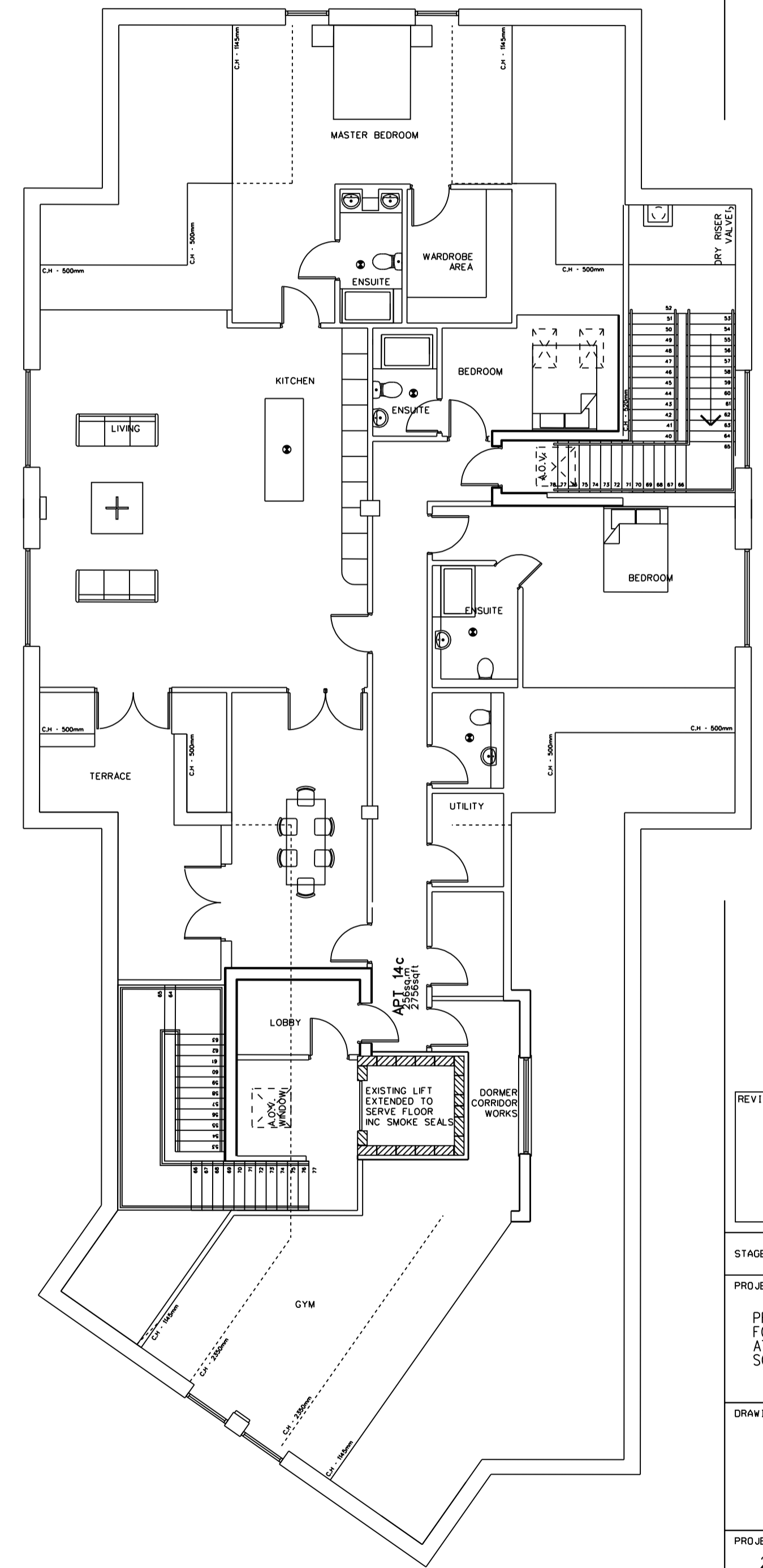
GROUND FLOOR



FIRST FLOOR



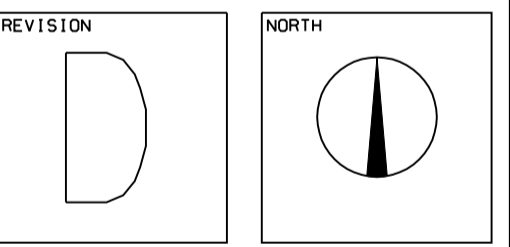
SECOND FLOOR



ROOF VOID

REVISION DATE / DESCRIPTION

- REVISION 'A' - 23.12.16
- LAYOUTS REVISED FOLLOWING CLIENT MEETING
- APARTMENT AREAS ADDED
- REVISION 'B' - 18.01.17
- G.F. CARAGING INTRODUCED
- G.F. APARTMENT REMOVED
- APARTMENTS RENUMBERED
- REVISION 'C' - 27.01.17
- GROUND FLOOR STORE DOORS REVISED
- EXTERNAL OPENINGS REVISED
- REVISION 'D' - 12.05.17
- GENERAL UPDATE FOLLOWING CLIENT FEEDBACK



STAGE - PLANNING

PROJECT
PROPOSED EXTERNAL MODIFICATIONS
FOR RESIDENTIAL PRIOR APPROVAL
AT MARKET DOCK, LONG ROW,
SOUTH SHIELDS, NE33 1JA

DRAWING
PROPOSED FLOOR PLANS

PROJECT NO. 2924	DRAWING NO. C-02	REVISION D
DATE OCT '15	SCALE 1:1000A1 1:2000A3	DRAWN BY DJB

MARIO MINICHELLA ARCHITECTS

UNIT 4, WITNEY WAY,
HI-TECH VILLAGE,
BOLDON BUSINESS PARK
TYNE AND WEAR
NE35 9PE
T: 0191 3082227
W: WWW.M-M-A.NET
E: INFO@M-M-A.NET

THIS DRAWING IS
COPYRIGHT OF
MARIO MINICHELLA
LIMITED

NOT TO BE SCALED
ALL DIMENSIONS TO
BE CHECKED ON SITE